

MONTHLY MEMBERSHIP PROGRESS REPORT

LOCATION INDIA

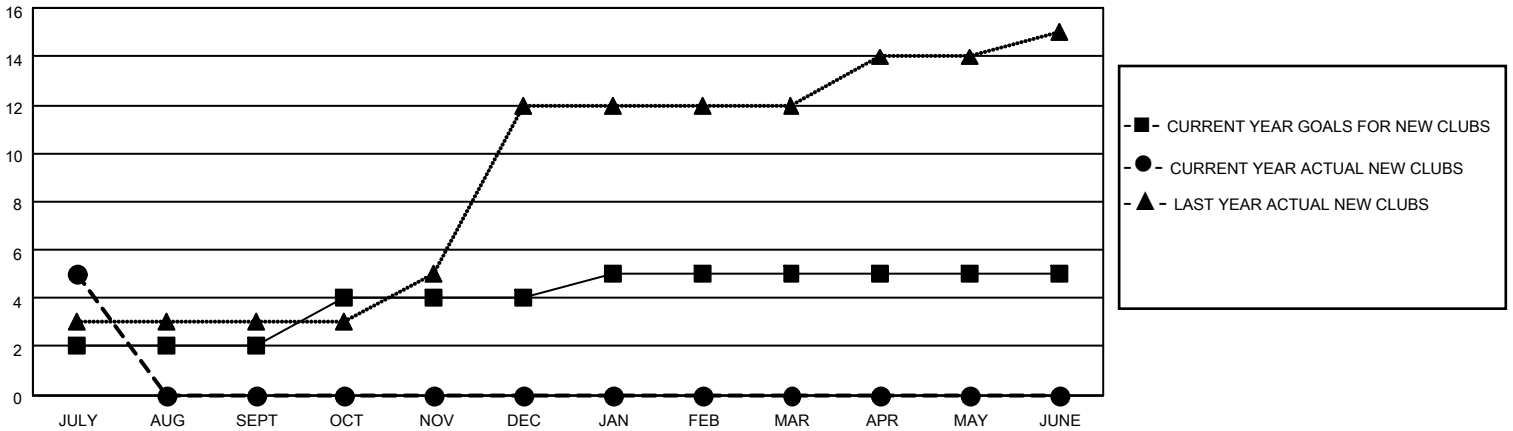
District 322 A

Results as of: 7/31/2021

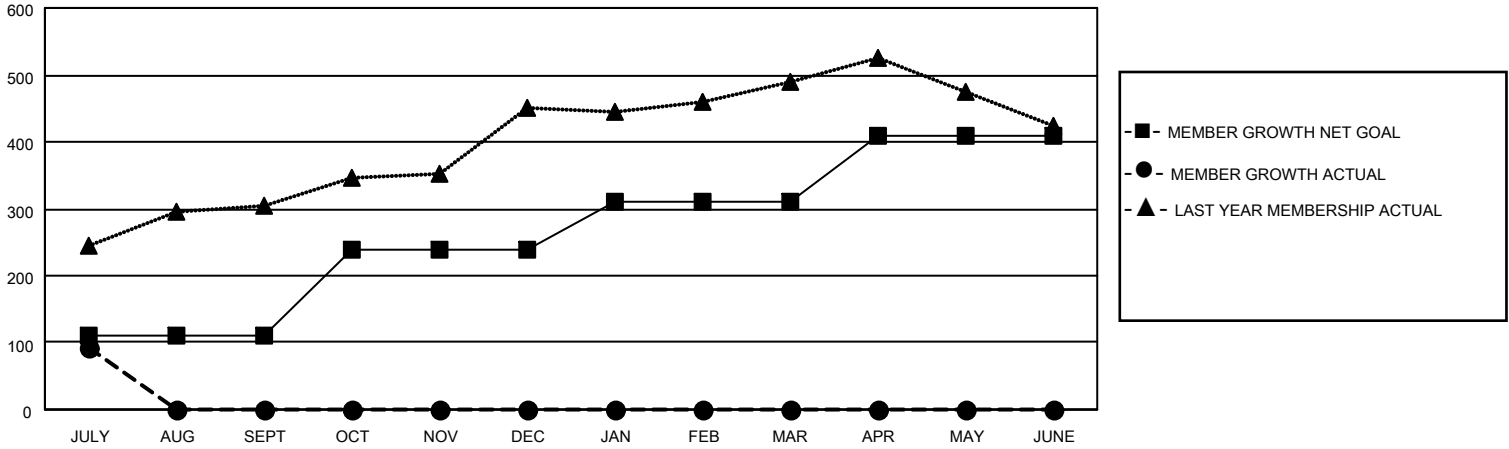
Clubs			
RESULTS FOR 2021-2022			
QUARTER	NEW CLUB GOAL	NEW CLUBS	DROPPED CLUBS
JULY/AUG/SEPT	2	5	0
OCT/NOV/DEC	2	0	0
JAN/FEB/MAR	1	0	0
APR/MAY/JUNE	0	0	0

Members			
RESULTS FOR 2021-2022			
QUARTER	MEMBER GROWTH NET GOAL	MEMBER GROWTH ACTUAL	DROPPED MEMBERS ACTUAL (including transfers)
JULY/AUG/SEPT	110	163	64
OCT/NOV/DEC	130	0	0
JAN/FEB/MAR	70	0	0
APR/MAY/JUNE	100	0	0

GOALS AND ACTUAL NEW CLUBS CUMULATIVE



GOALS AND ACTUAL MEMBERS CUMULATIVE



DROPPED CLUBS: 0	
<u>DROPPED MEMBERS</u>	
DECEASED	1
CLUB CANCELLED	0
OTHER	63
TOTAL	64

16 CLUBS OF 92 ADDED 1 OR MORE NEW MEMBERS

[CLICK HERE FOR CUMULATIVE MEMBERSHIP DATA](#)

<u>GENDER DISTRIBUTION</u>	
MALE	2,475 (69.64%)
FEMALE	1,079 (30.36%)

TOTAL FAMILY UNIT MEMBERS	1,653
FAMILY MEMBERS PAYING HALF DUES	878